

Filtek™ Z350 XT

Universal Restorative



Simple, versatile solutions
with beautiful results.

1.0mm

1.0mm

Everyone has a natural shade, and you've just found a simple way to match it.

As a leader in groundbreaking composite technologies, 3M ESPE has designed the next-generation, customer-defined nanocomposite: **Filtek™ Z350 XT Universal Restorative.**

If you've never used Filtek™ Z350 Universal Restorative or Filtek™ Supreme XT Universal Restorative, you're about to discover what has impressed dentists for years.

3M ESPE's "true nanotechnology" provides:

- Unsurpassed esthetics
- Outstanding strength for anterior and posterior use
- Wear resistance similar to enamel

If you're already using Filtek Z350 restorative, you'll be happy to know we've made it even better, helping you create natural-looking esthetics.

- Excellent polish and better polish retention than a microfill
- Enhanced fluorescence
- Expanded selection of Body shades for single-shade solutions
- Wide range of shades and opacities for multi-shade solutions

A2B



Simplicity

Beautiful restorations can be uncomplicated.

If you prefer the simplicity of a single-shade technique, you'll be pleased with the unsurpassed esthetics of Filtek™ Z350 XT Universal Restorative. We've taken the already impressive esthetics and improved the polish retention and fluorescence to help create the most natural-looking restorations ever.

While 8 basic shades will satisfy the esthetic needs of the majority of your patients, you'll find the expanded range of Body shades will give you more options for an ideal single-shade match.

And because this composite has exceptional strength, you can use one composite in both anterior and posterior cases.



Amalgam filling replaced using one shade of Filtek™ Z350 XT Universal Restorative, creating a strong, esthetic outcome.
Photo courtesy of Dr. Grant Chyz.

Filtek™ Z350 XT Universal Restorative

Unsurpassed Esthetics

- Excellent polish and polish retention of a microfill
- Wide range of shades and opacities
- Enhanced fluorescence

Simple to Use

- Expanded selection of Body shades
- Syringes are color-coded by opacity
- Bold, easy-to-read labels
- Exceptional handling
- Improved handling of Translucent shades

Performance

- Wear resistance equivalent to Filtek™ Z350 Universal Restorative
- Radiopaque
- Outstanding strength for anterior and posterior use

Bold new labels are easier to read at a glance, saving you time in finding your selected shade.



We put the **simple**
into your
restorative
technique.



Science

See why 3M ESPE's nanotechnology is so appealing to dentists.

To understand why Filtek Z350 XT Universal Restorative delivers results no other composite can, you need to understand HOW our nanotechnology is different, and why it's better.

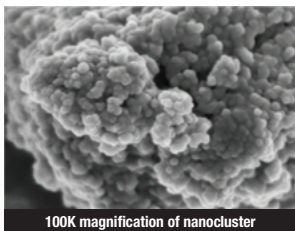
Nanometer-sized particles are the reason Filtek Z350 XT restorative retains its brilliant polish.

The initial gloss of most restoratives can be very impressive. But you want to know your restoration is going to retain its natural gloss for years. Tests prove the polish retention of Filtek Z350 XT restorative is better than other composites, and is even better than a microfill.

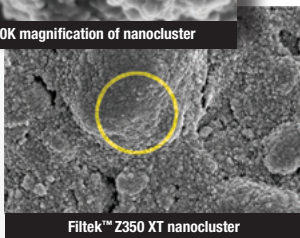
3M ESPE builds its nanocomposite using a patented process that creates unique clusters of NANOMETER-sized particles.

The nanoclusters shear at a rate similar to the wear of the surrounding resin matrix during abrasion. *This allows the restoration to maintain a smoother surface for long-term polish retention.*

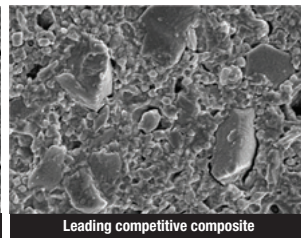
Source: 3M ESPE



100K magnification of nanocluster



Filtek™ Z350 XT nanocluster



Leading competitive composite

SEM photos courtesy of Dr. J. Perdigao, University of Minnesota.

In contrast, most other composites including micro- and nanohybrids incorporate larger particles that contribute significant roughness.



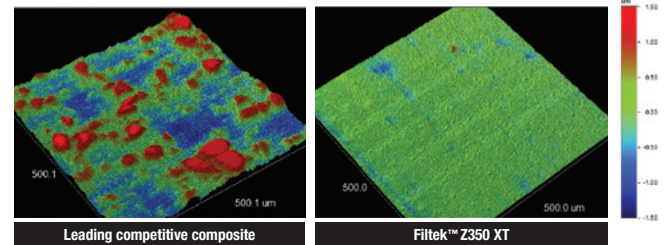
Leading competitive composite

Filtek™ Z350 XT Universal Restorative Body shade

Filtek™ Z350 XT Universal Restorative Translucent shade

Polish you can see. This side-by-side photo compares the polish retention of a leading restorative to that of Filtek™ Z350 XT Universal Restorative after 6,000 cycles of simulated toothbrushing.

Polish retention



This optical analysis compares the surfaces of a leading nano-optimized composite (left) and Filtek™ Z350 XT Universal Restorative (Dentin, Enamel, Body shade) after toothbrush abrasion. Source: 3M ESPE internal data

Our “true” nanotechnology provides wear resistance similar to enamel.

A recent 5-year clinical study* measuring “occlusal contact wear,” showed no statistically significant difference between Filtek™ Z350 Universal Restorative and enamel. Because Filtek Z350 XT restorative is derived from the same patented nanotechnology, and in vitro lab data has shown it has a wear resistance equivalent to Filtek Z350 restorative, *you can be confident using it anywhere in the mouth.*

*Source: Professor Paul Lambrechts and colleagues, Katholieke Universiteit Leuven, Belgium. Data on file.

Versatility

One simple shading system with endless possibilities.

Filtek Z350 XT restorative now offers a full palette of shades, designed to achieve beautiful results with a single-shade, dual-shade or multi-shade technique.

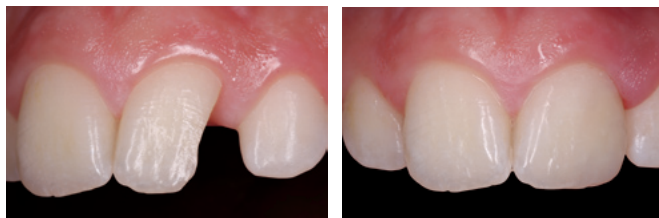
Make every restoration the best it can be.

- **Remarkable polish:** The restorative is now easier to polish and offers better polish retention than a microfill.
- **Translucent shades:** Experience even better handling.
- **Predictable results:** In either anterior or posterior cases.

Versatile yet uncomplicated.

We've made it even simpler to use—quickly find the shade you need.

- Color-coded by opacity
- Bold, easy-to-read labels



Restoration created using multiple shades of Filtek™ Z350 XT Universal Restorative. Photo courtesy of Dr. Gabriel Krastl, Department of Periodontology, Endodontics and Cariology, University of Basel, Switzerland.



Color is as much a subjective interpretation as it is a scientific manual on shade determination and matching does not exist. visual shade Enamel subjective protocol th others, clinicians should then be in a position to devise individual practice and equipment. Color is too often consider the esthetic success of a restoration. However, for error c might not be noticed in the other paragraphs. all r components of color, it is luminosity t Body However, the harmony of the final result in relation to the patient's smile, facial form, age and change dental arch, as well as the determination of space, are important. A strength we face allows one allows more direct reflection gives a lc perception (e.g., a reflection in the three-dim shade has the same reflection in the three-dim guide would be a matching armar indicate that there is a human observers discrimination as change human observer is dep relative positions of the illumination, the object and the observe

Opacities: Dentin, Body, Enamel and Translucent designations refer to differences in opacity.

Beautifully Versatile
to meet the needs of
YOUR practice.

Ordering Information

Item #	Product Information
7018S	Filtek™ Z350 XT Universal Restorative Single Shade Introductory Kit—Syringe Kit includes: 4 – 4g syringes: 2 each of Body shades A2 and A3; Technique Guide; Instructions for Use
7018D	Filtek™ Z350 XT Universal Restorative Dual Shade Introductory Kit—Syringe Kit includes: 4 – 4g syringes: 1 each of Dentin shades A3, A4, and Enamel shades A2, A3; 1 Shade Selector Wheel; Technique Guide; Instructions for Use



Syringes are color-coded by opacity for easier shade selection.

Create natural-looking restorations with the easy-to-use 3M™ ESPE™ Shade Selector Wheel.

Efficiency is everything in a busy dental practice. Our unique, easy-to-use Shade Selector Wheel simplifies the selection process and serves as a guide for placing one to four shades of composite. To help you meet your patients' needs, we include a Shade Selector Wheel in every Dual-Shade Kit.



REFILLS

DENTIN SHADES	SYRINGE	CAPSULE
A1D	7018A1D	
A2D	7018A2D	
A3D	7018A3D	
A4D	7018A4D	
B3D	7018B3D	
C4D	7018C4D	
White	7018WD	

BODY SHADES	SYRINGE	CAPSULE
A1B	7018A1B	7019A1B
A2B	7018A2B	7019A2B
A3B	7018A3B	7019A3B
A3.5B	7018A3.5B	7019A3.5B
A4B	7018A4B	7019A4B
A6B	7018A6B	
B1B	7018B1B	7019B1B
B2B	7018B2B	7019B2B
B3B	7018B3B	
B5B	7018B5B	
C1B	7018C1B	
C2B	7018C2B	7019C2B
C3B	7018C3B	7019C3B
D2B	7018D2B	
D3B	7018D3B	
White	7018WB	
Extra White	7018XWB	

ENAMEL SHADES	SYRINGE	CAPSULE
A1E	7018A1E	
A2E	7018A2E	
A3E	7018A3E	
B1E	7018B1E	
B2E	7018B2E	
D2E	7018D2E	
White	7018WE	
Extra White	7018XWE	

TRANSLUCENT SHADES	SYRINGE
Clear	7018CT
Blue	7018BT
Grey	7018GT
Amber	7018AT

SYRINGE SHADE REFILLS include 1 – 4g syringe; CAPSULE SHADE REFILLS include 20 – 0.2g capsules; Instructions for Use.



Name

Vskd Askikfgajer
Fayhin siekit Hainety
Askik Siekit Hainety
Country

Name

Vskd Askikfgajer
Fayhin siekit Hainety
Askik Siekit Hainety
Country

Please recycle. Printed in (Country).
© 3M 2010. All rights reserved.

3M, ESPE and Filtek are trademarks
of 3M or 3M ESPE AG.